

first'laser

The first'laser production line combines the know-how of the glass machine manufacturer Bystronic glass and the laser expertise of JENOPTIK Automatisierungstechnik GmbH.

The product portfolio comprises machines for:

- laser edge deletion
- TLS – thermal laser separation (TLS) as well as
- both processes combined in one compact machine including the separation unit

The first'laser production line can be operated as a stand-alone system and be integrated into all back-end or pre-processing lines in the most optimal way. Highly efficient and complete solutions will be created in combination with the TPS® I.G. lines for production of thin-film photovoltaic modules.

Advantages

- compact machine design
- modular configuration
- simple line integration
- cycle time neutral depaneling

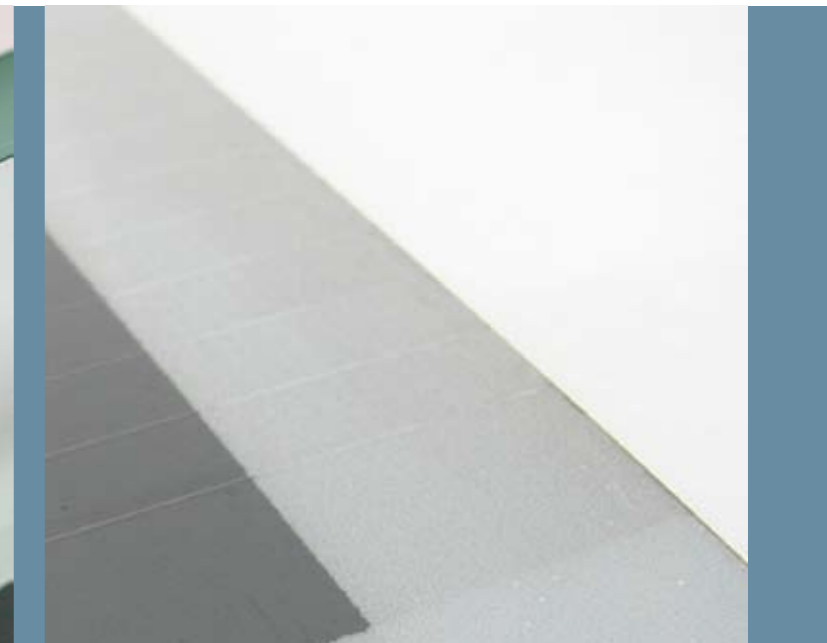
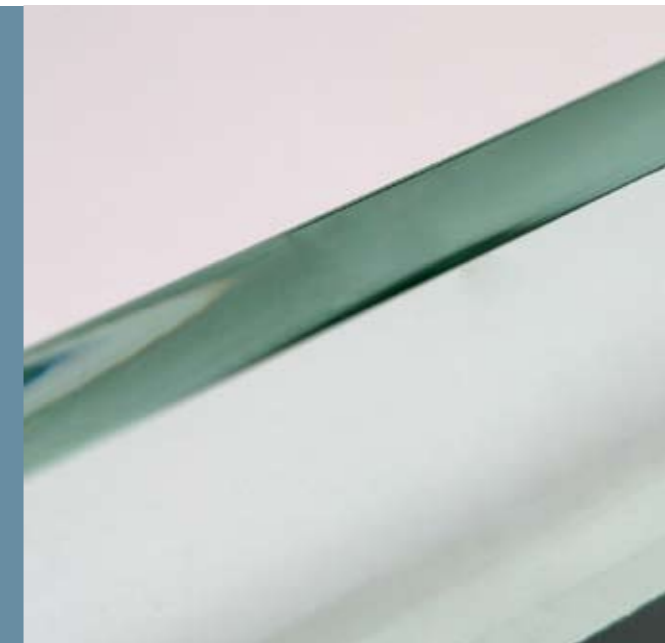


first'laser

Laser systems for the production of thin-film photovoltaic modules

TLS - Thermal Laser Separation

Laser Edge Deletion



Technical specification

System	first'laser 16 CD	first'laser 26 CD
Glass format	min. 500 x 500 mm max. 1600 x 1600 mm	min. 950 x 950 mm max. 2600 x 2600 mm
Glass thickness	min. 2 mm max. 6 mm	min. 2 mm max. 6 mm
Positioning accuracy	± 0.2 mm	± 0.2 mm
Cutting speed	max. 600 mm/s	max. 600 mm/s
Removal rate at edge deletion	max. 50 cm ² /s	max. 50 cm ² /s
Working height	930 ± 25 mm	930 ± 25 mm

JO-AT 10.08 2079.1 GB

The right is reserved to make technical improvements at all times.

Microcrack free glass edges reduce manufacturing costs

- shorter heating and cooling cycles in the coating process
- higher production uptime due to less glass breakage

Microcrack free glass edges increase PV module properties

- higher resistance to snow and hail
- more resistant to temperature fluctuations
- higher efficiency

Low cost of ownership

- high productivity, ablation speed up to 50 cm²/s
- low maintenance effort, no wear parts, no consumables

High quality

- no delamination, no lift off, no glass damage
- high transparency of ablated areas,
- electrical resistance > 1 GOhm

Available for all thin film technologies on any substrate size

Cooperation product of JENOPTIK Automatisierungstechnik GmbH and Bystronic Maschinen AG:

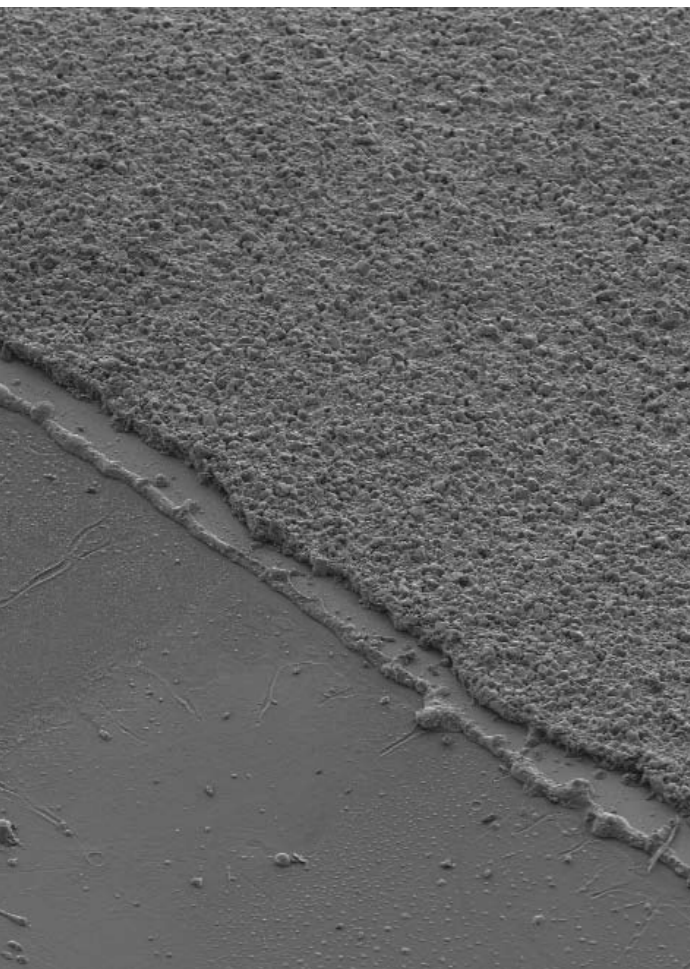
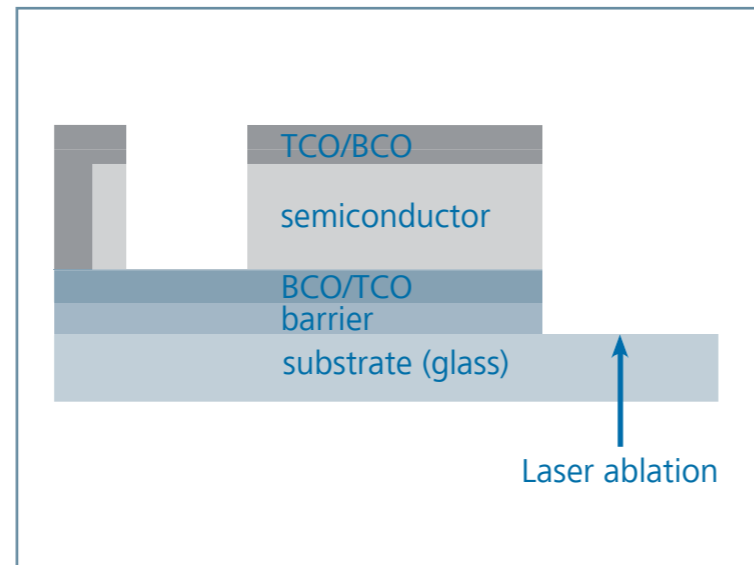
JENOPTIK GERMANY
 JENOPTIK Automatisierungstechnik GmbH
 Konrad-Zuse-Strasse 6 | 07745 Jena | Germany
 Phone +49 3641 65-2570 | Fax +49 3641 65-2571
 E-Mail: automation.marketing@jenoptik.com
 Website: www.automation-jenoptik.de

Bystronic glass
 Bystronic Maschinen AG | Industriestrasse 5 |
 4922 Bützberg | Switzerland
 Phone +41 62 958 77 77 | Fax +41 62 958 76 76
 E-Mail: bystronic@bystronic-glass.com
 Website: www.bystronic-glass.com

Laser Edge Deletion (LED)

Principle

- A short-pulsed high-performance laser will be shaped into a homogeneous beam spot.
- While superposing a moving beam with a transversal movement the laser spot traces the complete deletion area by an uniform motion
- The deletion process is carried out through the glass substrate. This ensures a high throughput and the risk of melting effects at the edge of the deletion area is eliminated



Laser deleted area (REM)

The laser edge deletion technique will facilitate the deletion of surface areas of coated sheet glass in economical way and in top quality. This will make it possible to simplify the production process of thin-film photovoltaic modules and to reduce the maintenance effort, as to achieve an improved product quality at lower costs. Deletion rates of between 25 cm²/s and 50 cm²/s will be attained almost independently of the layer configuration. The deletion process leaves a completely undamaged and smooth glass surface.

The minimal quantities of waste, which are generated in the process without any media being added, will be removed through an efficient extraction system and disposed subsequently in a simple way.

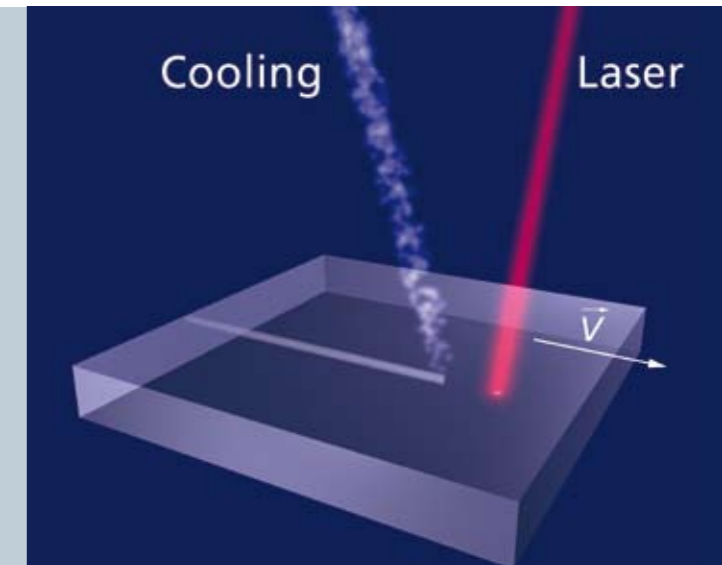
The benefits at a glance:

- customer-specific process parameters
- high transparency of the deletion area
- no delamination, no damage to the glass
- electrical resistance >1 GOhm
- deletion rate up to 50 cm²/s
- productivity higher than 60 panels/h

Thermal Laser Separation (TLS)

Principle

- Laser beam (red) heats up the material, whereby compressive stress is induced into the material
- Directly after the laser beam, a coolant (blue) is applied to the surface, causing tensile stress in the material
- Starting from the initial crack, a crack propagates along the working line



As laser processing is superior to mechanical processes, it opens up completely new perspectives. The advantages of TLS technique make it possible to integrate laser cutting into various stages of the production process.

The benefits at a glance:

- Ultra-thin as well as stronger glass can be safely and perfectly processed with the laser technology
- Laser cuts with a high and controlled precision
- Glass surfaces and cover layers will remain clean and undamaged, since no glass residues or splinters are generated
- The coating will remain flawless right up to the edge and thus fully functioning
- Splinter-free laser scoring or cutting will increase both edge quality and strength
- Wear free laser tools – long service life
- It is possible to save process steps, such as grinding and cleaning
- High flexibility & process stability - low process costs



TLS-glass edge