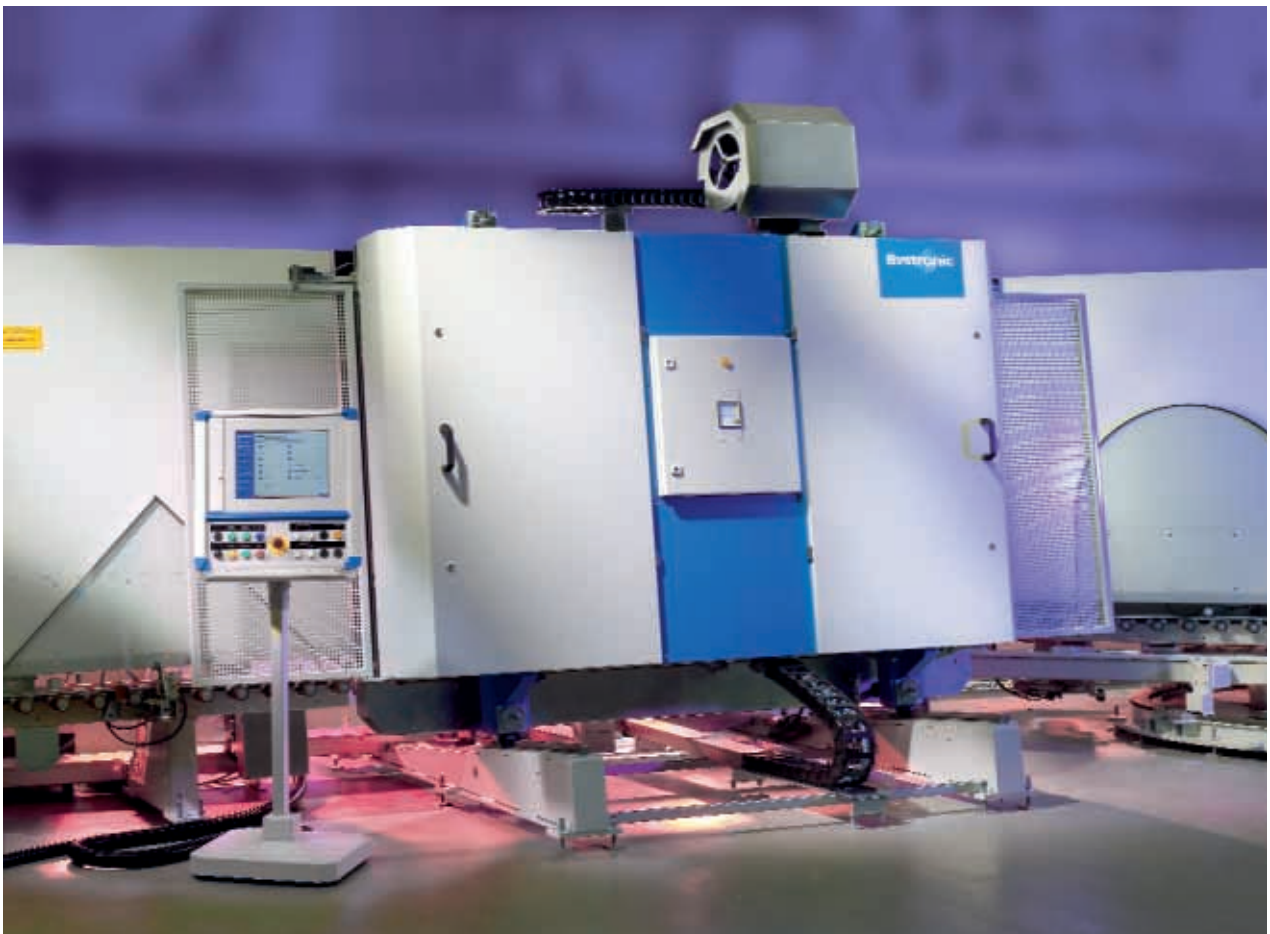


**Assembly-, gas fill- and  
press robots  
Types ZP-R**

**Gas filling of rectangular and shaped formats at highest level**

- ◆ Automatic assembling and pressing of insulating glass units, optional with gas filling
- ◆ Slip free glass plate transport via servo controlled belt conveyor
- ◆ Optimized gas filling for rectangular and shaped formats
- ◆ Gas filling times independent of the length of the insulating glass units
- ◆ Adjustable, precise press plate guiding
- ◆ Pressing of rigid and flexible spacer types
- ◆ Two-step-pressing of insulating glass units with excessive length



## Types ZP-R and ZPG-R

- ◆ Types in single version
- ◆ Simultaneous assembling and pressing of insulating glass units (type ZP-R)
- ◆ Simultaneous assembling, gas filling and pressing of insulating glass units (type ZPG-R)

## Types ZPG-RTU and ZPG-RTG

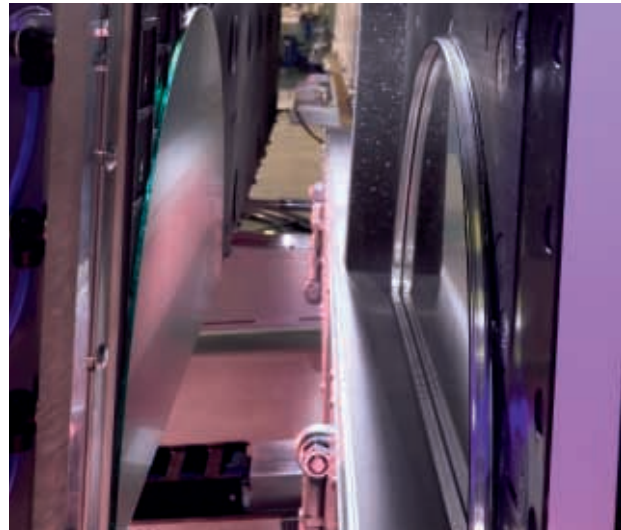
- ◆ Types in tandem version
- ◆ Simultaneous assembling, gas filling and pressing of two insulating glass units
- ◆ Separated press plates for tandem operation (type ZPG-RTG), single operation for oversized units
- ◆ Unseparated press plate for tandem operation with identical glass-/frame arrangement (type ZPG-RTU)

## Options

- ◆ Additional equipment for gas filling with Krypton as well as gas mixtures
- ◆ Additional equipment for gas filling of triple insulating glass units
- ◆ Assembling/automatic gas filling of stepped insulating glass units (1- up to 3-sided)
- ◆ Fast reacting sensor for permanent control and monitoring of the gas filling process
- ◆ Additional device for processing of TPS® insulating glass



Rectangular format inside the press robot



Shaped format inside the press robot

Technical data	ZP-R / ZPG-R	ZPG-RTU	ZPG-RTG
Working heights	1.60 m/2.30 m/2.70 m (63.0 in./90.6 in./106.3 in.)	1.60 m/2.30 m/2.70 m (63.0 in./90.6 in./106.3 in.)	1.60 m/2.30 m/2.70 m (63.0 in./90.6 in./106.3 in.)
Processable dimensions	min. 170 mm x 350 mm (6.7 in. x 13.8 in.)	min. 170 mm x 350 mm (6.7 in. x 13.8 in.)	min. 170 mm x 350 mm (6.7 in. x 13.8 in.)
	max. 2700 mm x 3500 mm (106.3 in. x 137.8 in.)	max. length in tandem operation 1650 mm (65.0 in.) max. length in single operation 3500 mm (137.8 in.)	max. length in tandem operation 2250 mm (65.0 in.) max. length in single operation 5000 mm (196.9 in.)
using two-step-pressing	up to max. 4500 mm (1772 in.)	up to max. 4500 mm (1772 in.)	up to max. 6000 mm (236.2 in.)
Insulating glass thickness	max. 60 mm (2.36 in.)	max. 60 mm (2.36 in.)	max. 60 mm (2.36 in.)
Glass thickness	max. 15 mm (0.59 in.) (optional 30 mm [1.18 in.]	max. 15 mm (0.59 in.) (optional 30 mm [1.18 in.]	max. 15 mm (0.59 in.) (optional 30 mm [1.18 in.]

**Bystronic Maschinen AG**  
Industriestrasse 5  
CH-4922 Bützberg  
Phone +41 (0)62 958 77 77  
Fax +41 (0)62 958 76 76  
www.bystronic-glass.com  
bystronic@bystronic-glass.com

**Lenhardt Maschinenbau GmbH**  
Karl-Lenhardt-Strasse 1-9  
D-75242 Neuhausen-Hamberg  
Phone +49 (0)7234 601 0  
Fax +49 (0)7234 17 19  
www.bystronic-glass.com  
lenhardt@bystronic-glass.com

**Armaterc Vierhaus GmbH**  
Industriestrasse 19  
D-91710 Gunzenhausen  
Phone +49 (0)9831 5002 0  
Fax +49 (0)9831 5002 20  
www.bystronic-glass.com  
armaterc@bystronic-glass.com

Further subsidiaries and representatives worldwide